

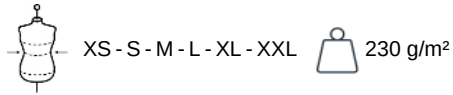
KARIBAN  
PREMIUM

PK201

## Ladies' short-sleeved Supima® polo shirt

- Premium American Supima® cotton. This cotton's extra long fibres give it extra softness and durability.
- Understated, elegant, straight fit.

95% cotton / 5% elastane. Piqué knit in Supima® cotton. High-quality fabric, soft and silky to the touch. 1x1 ribbed neck, matching taped neck inside the neckline. Placket with 2 matching buttons. Shoulder seam backed with silicon band. Twin-needle overstitched finish at cuffs and hem. No brand label on neck, only size tag for easy decoration access.

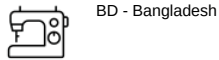


### More information

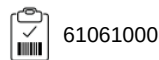
#### Logistic



#### Country of origin



#### Customs code



#### Washing instructions



### Also available in version



PK200



KARIBAN  
PREMIUM

PK201

Ladies' short-sleeved Supima® polo shirt

Dimensions (cm)



Measurements in cm	XS	S	M	L	XL	XXL
TE01 - 1/2 chest width at 1.5cm below armhole	43.00	46.00	49.00	52.00	55.00	58.00
TF03 - Front total height from HSP	61.00	63.00	65.00	67.00	69.00	71.00
TG07 - Short sleeve length	15.25	16.00	16.75	17.50	18.25	19.00

# KARIBAN PREMIUM

PK201

## Ladies' short-sleeved Supima® polo shirt

### Colours information



**Black**  
RVB : 35,35,37  
Pantone C : Black  
Pantone TCX : 19-4004TCX



**Deep Navy**  
RVB : 34,35,47  
Pantone C : 532C  
Pantone TCX : 19-3924TCX



**White**  
RVB : 236,236,252  
Pantone C : White  
Pantone TCX : 11-0601TCX

Logistic



5



30

Sizes	Width (cm)	Height (cm)	Length (cm)	Net weight (kg)	Gross weight (kg)	Pieces/Box	Pieces/Bundle
XS	40.00	16.00	60.00	5.55000	6.87000	30	5
S	40.00	16.00	60.00	5.55000	6.87000	30	5
M	40.00	16.00	60.00	5.55000	6.87000	30	5
L	40.00	16.00	60.00	5.55000	6.87000	30	5
XL	40.00	16.00	60.00	5.55000	6.87000	30	5
XXL	40.00	16.00	60.00	5.55000	6.87000	30	5